



GyroTracer[™]



Overview

The GyroTracer[™] instrument is a highly accurate, extremely reliable downhole directional survey and orientation tool. Comprising of the latest technology, the SPT system uses gyro compassing method to find direction.

As it is a North Seeking Gyro, all measurements are in reference to geographic north. Unlike other downhole survey or magnetic tools, the GyroTracer[™] is not affected by magnetic interference. It can be run inside casing, tubing, drill pipe and magnetically disturbed ground.

This 42mm diameter, easy to use system can be run in a variety of applications from shallow borehole to deep borehole surveying, single shot/multi shot, slim hole casing, orientation, whip stock kick-off and downhole motor orientation. Operating software to run all SPT instruments is very reliable and user friendly.

The GyroTracer[™] package comes with both wireline and memory mode option. Wireline mode is run from an electric line cable transmitting real time data to the computer at the surface. Mono or multiple conductor cable can be used. Memory mode is fast and cost efficient as this is powered by battery supply and run on slick line.

Features and benefits

- Not affected by magnetic interference
- No field calibration or roll test required before each survey
- Collar azimuth not required. Only latitude of hole needs to be entered into the software program
- No sight alignment is required
- No drift. Each survey is independent and not in relation to the previous survey
- Can traverse in hole at up to 120m/min
- Package includes both wireline and memory mode
- Short length, light weight tool
- User friendly software
- Very accurate and reliable
- Built inside high grade titanium pressure barrel
- No other running gear required
- Possible to calibrate at customer facilities
- Rugged design
- Minimal downtime as all operating equipment and software is very reliable
- All azimuth measurements are in reference to geographical north
- Export all your survey data to Excel and other formats

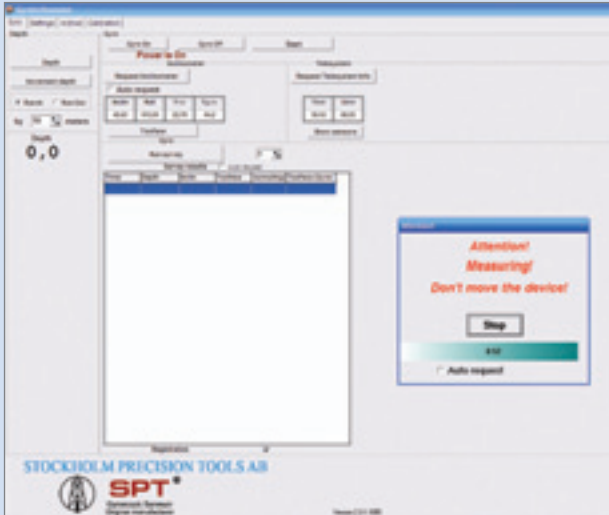


Specifications

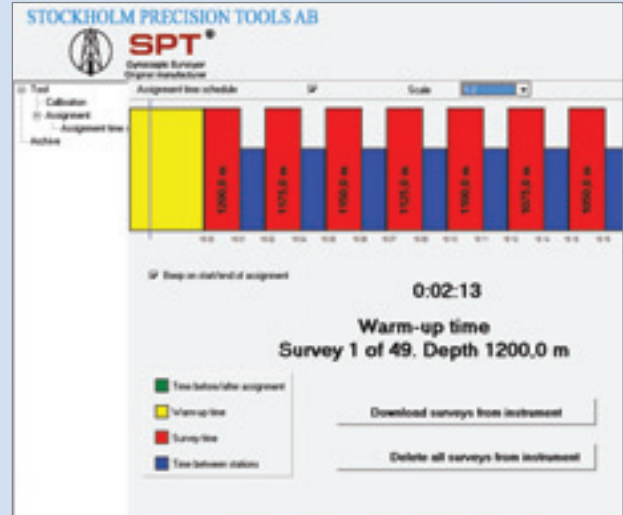
- Gyrocompassing survey time of 55 seconds
- Azimuth accuracy of +/- 1.0° in inclination range from 1.0° - 70.0° (from vertical)
- Repeatability in azimuth +/- 0.5°
- Inclination accuracy of +/- 0.1°
- Gravity toolface accuracy of +/- 0.1°
- Gyroscopic toolface accuracy of +/- 1.0° in inclination range from 0.0° - 1.0° (from vertical)
- Temperature rating : - 30°C to +100°C (-22°F to +212°F)
- Pressure rating: 103Mpa (15.000psi)
- Dynamically tuned mutli-axis close loop gyroscope
- Quartz technology accelerometers

Dimensions

- OD 42 mm (1.65")
- Length 2300 mm (90,55") – Wireline mode, 2000 mm (78,74") – Memory mode
- Weight 15 kg (33,07 lb)



Wireline Mode Surveying



Memory Mode Surveying



The basic components in the GyroTracer™ package



Any PC can be used for running the software (Not included in the package)



Worldwide Tool Operation:

USA	UAE	Mexico
Canada	Iran	Syria
Australia	Oman	Nigeria
Russia	Armenia	
India	Tunisia	
Colombia	Malawi	
Chile	Italy	
Honduras	Iceland	

www.stockholmprecisiontools.com
info@stockholmprecisiontools.com

Stockholm Precision Tools AB | SPT™
 Domherrevägen 11, 192 55 Sollentuna, Sweden
 Phone: +46 8 590 733 10
 Fax: +46 8 590 731 55

© 2005-2009. SPT™
 All Rights Reserved

