

MagCruiser NanoTM



Overview

The MagCruiser NanoTM is a memory surveying instrument with drop capability that provides magnetic azimuth along with inclination and toolface readings. It is designed for boreholes of the mining industry and it has a temperature rating of +125°C.

After programming the instrument and synchronizing with the computer at the surface, individual or cluster surveys can be taken at any given depth/s in the hole. At completion of the survey, the instrument is simply reconnected to the computer with a cable and the survey data is downloaded in seconds. The archive results have the option to be filtered and exported to Excel.

A single survey allows the operator to measure the azimuth and dip at one depth. Multi-shot mode allows the operator to take many surveys at any depths to find information on the well path and coordinate positions. This can be done on Run-In, Run-Out or both. The instrument is not run on a timer so survey shots can be taken at any depth or time.

Features and benefits

- Temperature rating to +125°C (+257°F)
- Outer diameter of only 32 mm (1.26") in pressure barrel
- No need of optional pressure barrel or heat shield
- Drop capability
- Easy to operate
- Single-shot, Multi-shot and Orientation capabilities
- Operates from battery in memory mode
- Measures in all directions
- Durable for harsh environments
- USB data communication
- Export all your survey data to Excel and other formats



Specifications

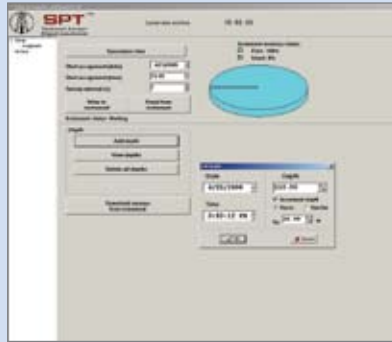
- Magnetic Azimuth (Direction) from 0 - 360°, accurate to $\pm 0.5^\circ$
- Inclination (Dip) from 0 - 360°, to within $\pm 0.1^\circ$
- Gravity Toolface from 0 - 360°, to within $\pm 0.1^\circ$
- Magnetic Toolface from 0 - 360°, to within $\pm 0.2^\circ$
- Total Magnetic Field from 0 - 100,000nT
- Dip from -90° from horizontal, to within $\pm 0.2^\circ$
- Temperature rating (hole temp) from -40°C to +125°C (-40°F to +257°F)
- Pressure rating to 103Mpa (15.000psi)

Dimensions

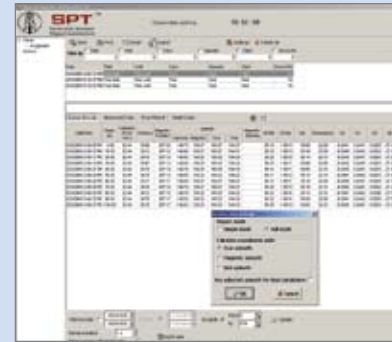
- OD 32 mm (1,26")
- Length 1000 mm (39,37")
- Weight 4 kg (8,82 lb)



Any PC can be used for running the software
(Not included in the package)



Survey screen



Results screen



Worldwide Tool Operation:

USA	UAE	Mexico
Canada	Iran	Syria
Australia	Oman	Nigeria
Russia	Armenia	
India	Tunisia	
Colombia	Malawi	
Chile	Italy	
Honduras	Iceland	

www.stockholmprecisiontools.com
info@stockholmprecisiontools.com

Stockholm Precision Tools AB | SPT™

Domherrevägen 11, 192 55 Sollentuna, Sweden
Phone: +46 8 590 733 10
Fax: +46 8 590 731 55

© 2005-2009. SPT™
All Rights Reserved

