

MagCruiser HTTM



Overview

The MagCruiser HTTM is a memory surveying instrument with drop capability that provides magnetic azimuth along with inclination and toolface readings. It is designed for deep wells of the oil and gas sector as it has a temperature rating of +200°C. This is the big brother of the standard MagCruiserTM.

After programming the instrument and synchronizing with the computer at the surface, individual or cluster surveys can be taken at any given depth/s in the hole. At completion of the survey, the instrument is simply reconnected to the computer with a cable and the survey data is downloaded in seconds. The archive results have the option to be filtered and exported to Excel.

A single survey allows the operator to measure the azimuth and dip at one depth. Multi-shot mode allows the operator to take many surveys at any depths to find information on the well path and coordinate positions. This can be done on Run-In, Run-Out or both. The instrument is not run on a timer so survey shots can be taken at any depth or time.

Features and benefits

- Temperature rating to +200°C (+392°F)
- Outer diameter of only 42 mm (1.65") in pressure barrel
- No need for optional pressure barrel or heat shield
- Drop capability
- Easy to operate
- Single-shot, Multi-shot and Orientation capabilities
- Operates from battery in memory mode
- Measures in all directions
- Durable for harsh environments
- USB data communication
- Export all your survey data to Excel and other formats



Specifications

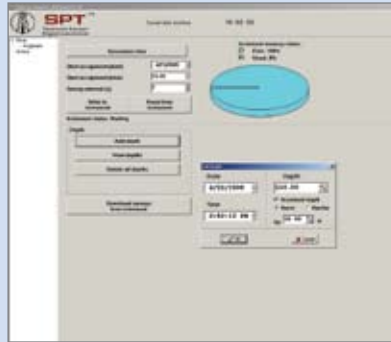
- Magnetic Azimuth (Direction) from 0 - 360°, accurate to $\pm 0.5^\circ$
- Inclination (Dip) from 0 - 360°, to within $\pm 0.1^\circ$
- Gravity Toolface from 0 - 360°, to within $\pm 0.1^\circ$
- Magnetic Toolface from 0 - 360°, to within $\pm 0.2^\circ$
- Total Magnetic Field from 0 - 100,000nT
- Dip from -90° from horizontal, to within $\pm 0.2^\circ$
- Temperature rating (hole temp) from -40°C to +200°C (-40°F to +392°F)
- Pressure rating to 103Mpa (15.000psi)

Dimensions

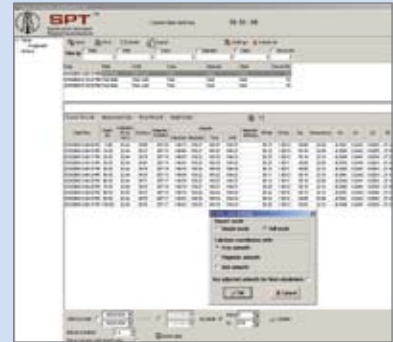
- OD 42 mm (1,65")
- Length 1550 mm (61,02")
- Weight 14 kg (30,86 lb)



Any PC can be used for running the software
(Not included in the package)



Survey screen



Results screen



Worldwide Tool Operation:

USA	UAE	Mexico
Canada	Iran	Syria
Australia	Oman	Nigeria
Russia	Armenia	
India	Tunisia	
Colombia	Malawi	
Chile	Italy	
Honduras	Iceland	

www.stockholmprecisiontools.com
info@stockholmprecisiontools.com

Stockholm Precision Tools AB | SPT™

Domherrevägen 11, 192 55 Sollentuna, Sweden
Phone: +46 8 590 733 10
Fax: +46 8 590 731 55

© 2005-2009. SPT™
All Rights Reserved

